

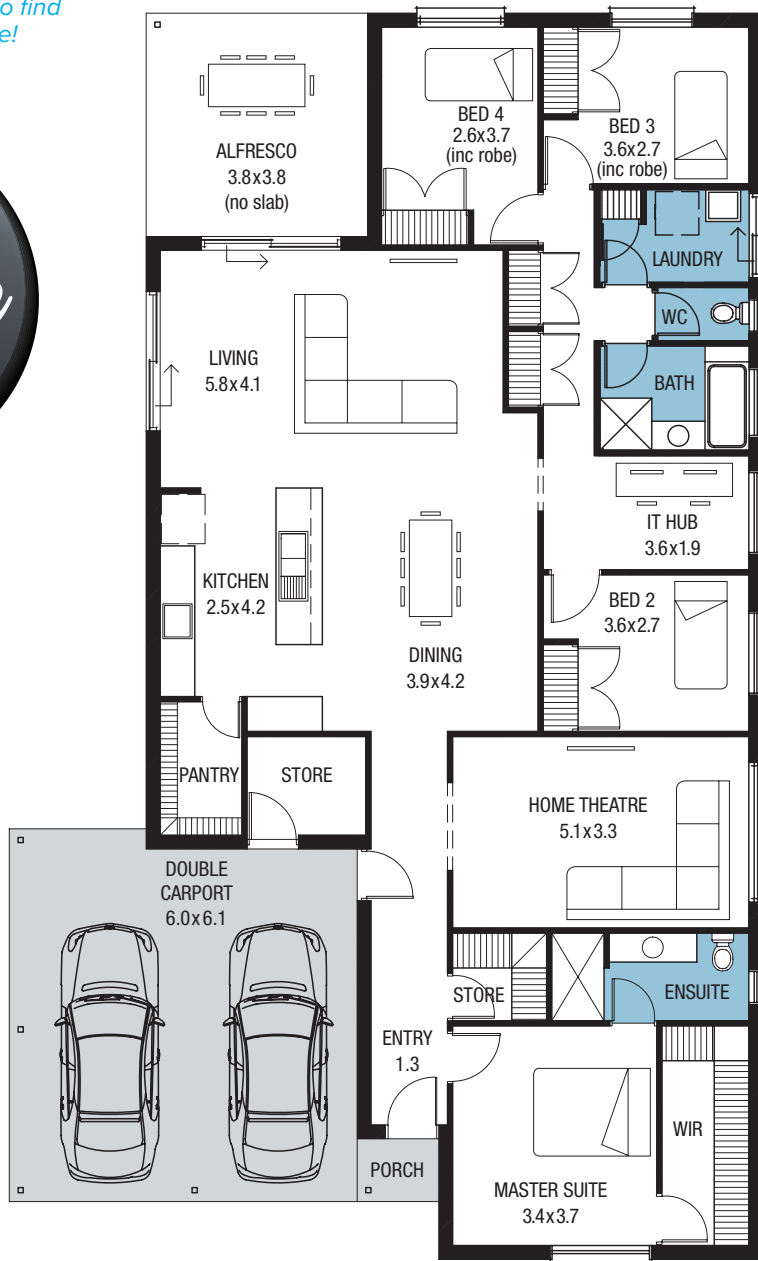


Stay connected with an IT hub in the spacious 4 bedroom Kentucky Alfresco. Clever storage, a huge home theatre, a luxurious master suite and an alfresco area means this home really works well for the whole family.

Home width	13.14m
Home depth	21.47m
Living	185.91m ²
Double carport	38.05m ²
Total area	240.24m ²



Modifications available for this floorplan. Ask us to find out more!



With 4 bedrooms, each with a walk-in robe, a large walk-in pantry and 2 storage areas, the Nevada Alfresco has plenty of storage for the whole family! With a large open plan living area that spills out onto the alfresco, entertaining has never been easier!

Home width	17.00m
Home depth	20.00m
Living	211.82m ²
Double carport	35.21m ²
Total area	266.12m ²





Scan the QR code with your phone to see all of our display home locations

SA HOUSING
CENTRE

25 North Terrace
Hackney SA 5069
Call 1300 730 187
sahousingcentre.com.au

On Display at Liberty Estate
Jefferson Boulevard, Two Wells

Open 1-5pm Mon, Wed, Sat, Sun
and Public Holidays