



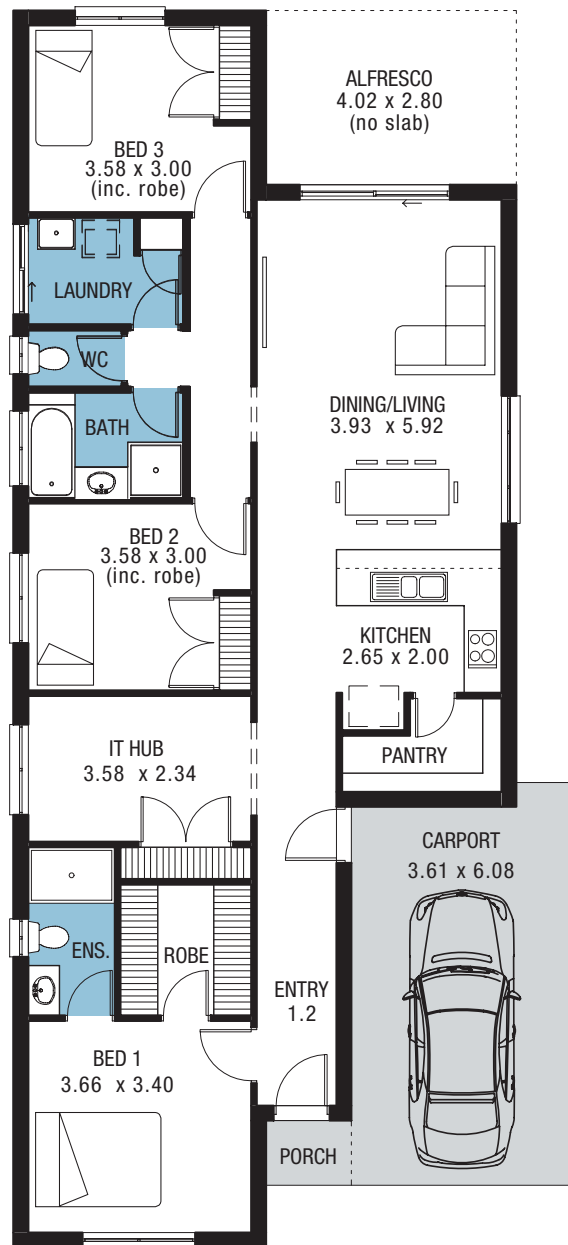


With its dedicated IT hub and alfresco area, the Nampa Alfresco is ideal for the busy family who likes to entertain!

Home width	9.04m
Home depth	19.87m
Living	127.90m <sup>2</sup>
Single carport	22.32m <sup>2</sup>
Total area	162.82m <sup>2</sup>



Modifications available for this floorplan. Ask us to find out more!



Scan the QR code with your phone to see all of our display locations.