

House and Land

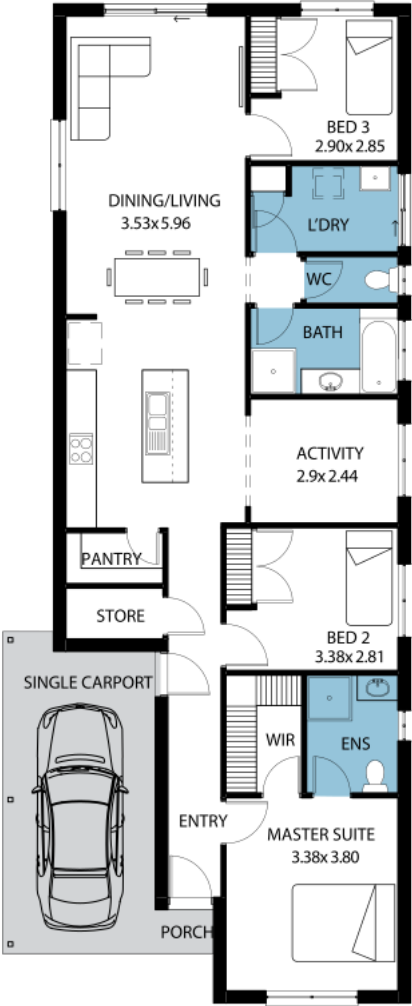
from
\$427,210*

LOT 483
Goldfinch Grove
Port Noarlunga South
'Louisville'

Lot Size 300.00m²
Design Louisville
Block Size 300m²
House Size 140m² / 15.16sqm
Width 8.00m



3 1 2 1





**Lucky you,
all these
impressive
features are
included with
this home**

SUNSET ESTATE

- \$10K Land Discount & House Discount included
- Benched & retained by developer
- Additional 1m width to garage
- Panel-lift door & remotes
- Carpeted bedrooms & timber laminate to remainder
- Ducted reverse cycle air-conditioner with zoning
- Overhead kitchen cupboards incl. above fridge
- Stainless steel appliances to kitchen

- Instantaneous hot water system
- TV points (2x)
- Complimentary stainless-steel dishwasher
- Complimentary house termite treatment
- NBN ready
- FREE Square Set Cornices to Entry, Living and Dining
- Generous Siteworks & Footings Allowance
- 3 Month Maintenance
- 25 Year Structural Guarantee