

# House and Land

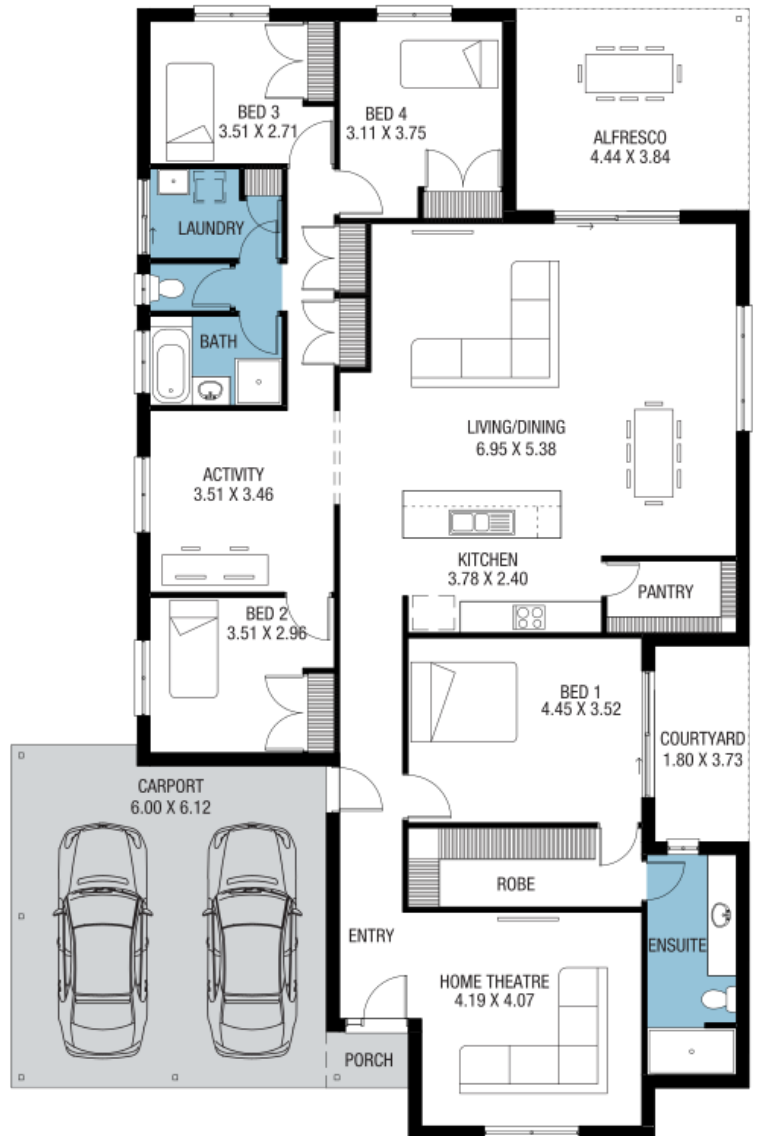
from **\$523,313\***

LOT 213  
Luxmoore Road  
Angle Vale  
'Washington Alfresco'

Lot Size 681.00m<sup>2</sup>  
Design Washington Alfresco  
Block Size 681m<sup>2</sup>  
House Size 258m<sup>2</sup> / 27.82sq  
Width 14.03m



4 2 2 2





**Lucky you,  
all these  
impressive  
features are  
included with  
this home**

\$10,000 discount applied on build  
(Limited Time Offer)

Automatic single span panel lift door  
with remote control

Ducted reverse cycle air conditioning

2700mm ceiling height

Carpet to Bedrooms

Timber Laminate to remainder

Overhead cupboards to Kitchen,  
including over fridge

Stainless Steel Cooktop, Oven,  
Westinghouse Retractable Rangehood

Dishwasher & Microwave provision

National Broadband Network Provision  
(NBN)

Robes to all bedrooms & Flyscreens to  
all windows (excludes sliding doors)

FREE Whole by Home termite  
protection

FREE Square Set Cornices to Entry,  
Living and Dining

FREE Milan Semi-Frameless Shower  
Screens

Insulation R2.5 to External Walls R5.0  
to Ceiling

Generous Siteworks and Footings  
Allowance

3 Month Maintenance

25 Year Structural Guarantee