

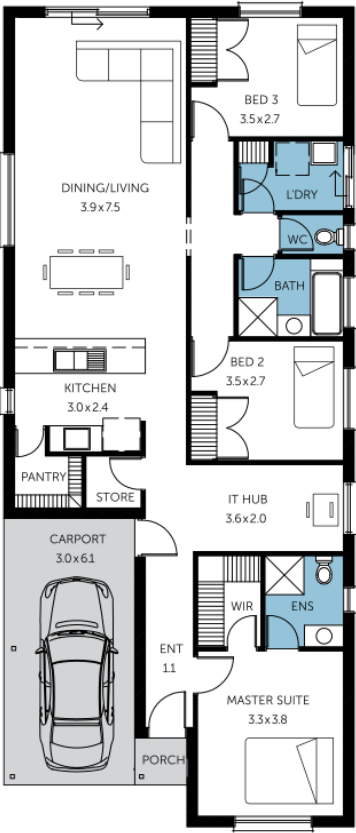
House
and Land
from
\$453,811*

LOT 437
Kestrel Avenue
Port Noarlunga South
'New Orleans'

Lot Size	300.00m ²
Design	New Orleans
Block Size	300m ²
House Size	147m ² / 15.84sqsq
Width	8.03m



 3  1  2  1





**Lucky you,
all these
impressive
features are
included with
this home**

Benched and retained block in Sunset Estate

\$10,000 House discount

Frontage as selected or your choice

Upgraded single span panel-lift door & remotes

Upgraded to 2700mm ceiling height/25 degrees pitch/450 mm eaves

Flooring allowance (Carpets/Timber laminate)

Ducted reverse cycle air-conditioning

Flyscreens & locks to windows

Insulation to external walls & ceiling

900mm high mirror to Ensuite & Bath

Colorbond roof included

Stain steel appliances to Kitchen

Flat breakfast bar to Kitchen

Overhead cupboards to Kitchen

Dishwasher provision & microwave provision to kitchen

FREE Square Set Cornices to Entry, Living and Dining

FREE Milan Semi-Framed Shower Screens

3 Month Maintenance

25 Year Structural Guarantee

Generous site works and footing allowance