

House and Land

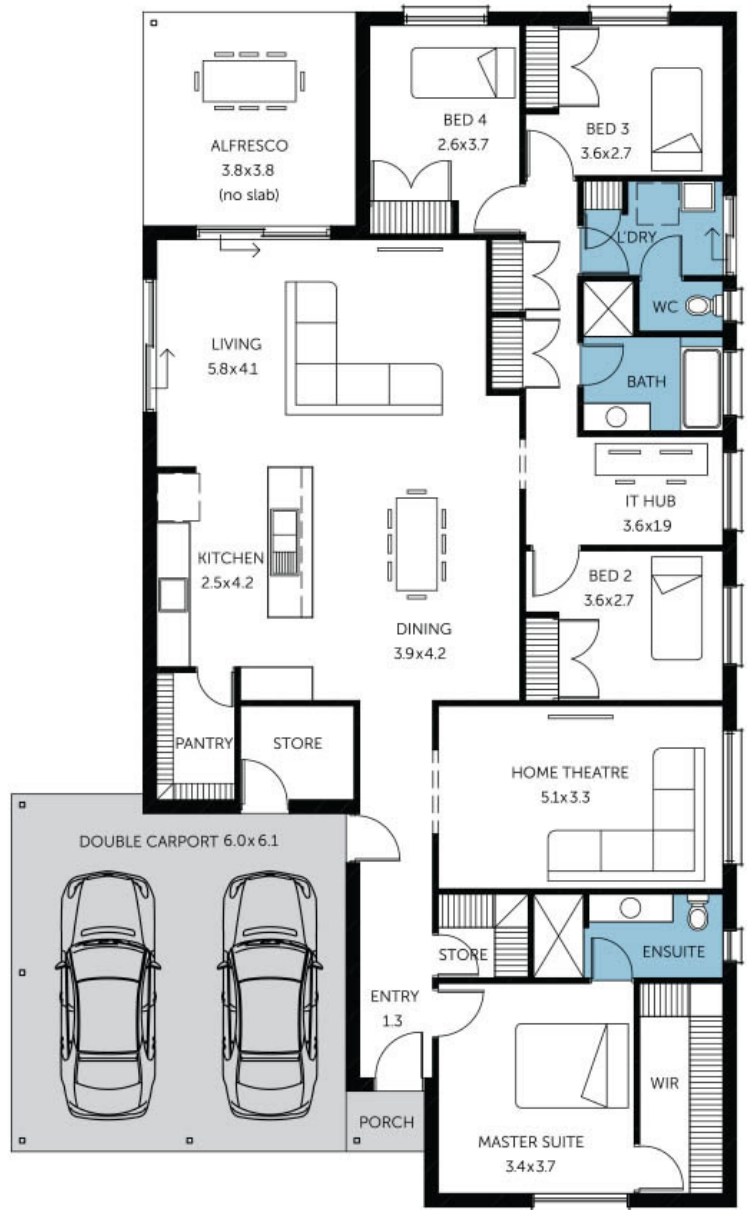
from **\$435,480***

LOT 229
Violet Avenue
Hayborough
'Kentucky Alfresco'

Lot Size 540.00m²
Design Kentucky Alfresco
Block Size 540m²
House Size 240m² / 25.86sq
Width 13.14m



 4
  2
  2
  2





**Lucky you,
all these
impressive
features are
included with
this home**

Benched and retained block in the Rise

\$10,000 House discount

Frontage as selected or your choice

Upgraded single span panel-lift door & remotes

Upgraded to 2700mm ceiling height/25 degree/450mm eaves

Flooring allowance (Carpets/Timber laminate)

Ducted reverse cycle air-conditioning

Flyscreens & locks to windows

Insulation to external walls & ceiling

900mm high mirror to Ensuite & Bath

Colorbond roof included

Stain steel appliances to Kitchen

Flat breakfast bar to Kitchen

Overhead cupboards to Kitchen

Dishwasher provision & microwave provision to kitchen

FREE Square Set Cornices to Entry, Living and Dining

FREE Milan Semi-Framed Shower Screens

3 Month Maintenance

25 Year Structural Guarantee

Generous site works and footing allowance