

House and Land

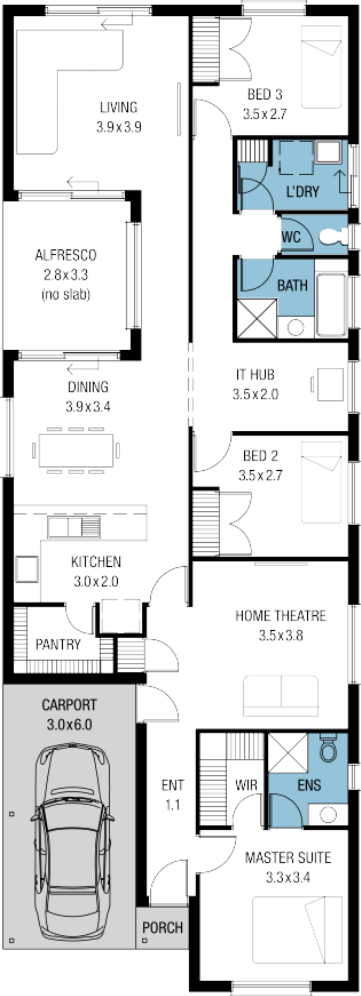
from
\$537,000*

LOT 621
Bottrell Avenue
Ingle Farm
'Kansas Alfresco'

Lot Size 327.00m²
Design Kansas Alfresco
Block Size 327m²
House Size 175m² / 18.85sqs
Width 8.03m



 3  2  2  1





**Lucky you,
all these
impressive
features are
included with
this home**

\$18000 free upgrades for April

Frontage as selected or your choice

Upgraded single-span panel-lift door & remotes

Upgraded to 2700mm ceiling height

Flooring allowance (Carpets/Timber laminate)

Ducted reverse cycle air-conditioning

Insulation to external walls & ceiling

Colorbond roof included

Stain steel appliances in Kitchen

Flat breakfast bar to Kitchen

Overhead cupboards to Kitchen

Dishwasher provision & microwave provision to kitchen

3 Month Maintenance

25 Year Structural Guarantee

The generous site works and footing allowance